

Distal Fibula Anatomic Locking Plate



The Hudson Locking Distal Fibula plate is indicated for the treatment of fractures of the distal fibula. The plate design contains numerous features to increase the fixation success and patient comfort after the surgery.

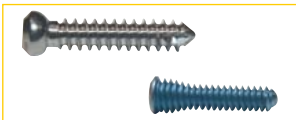
The design of the Hudson Locking Distal Fibula Plate maximizes the bone fracture stabilization and minimizes soft tissue irritation for the patient.

Beveled plate edges to minimize irritation

Combined screw hole to provide Dynamic Compression or Locking Stabilization on the same screw hole

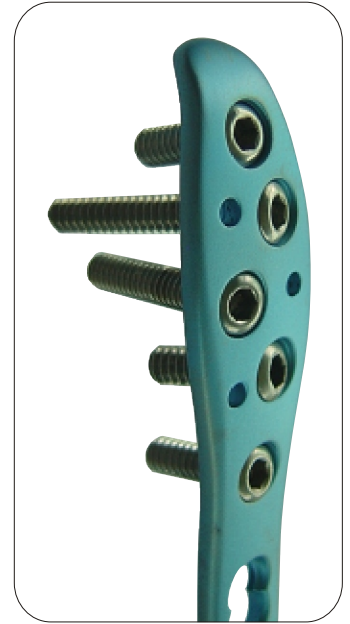
K-wire holes for provisional stability

Low profile plate/screw interface

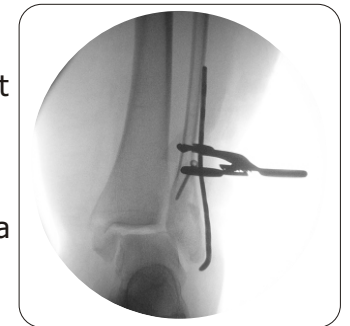


The Hudson Locking Fibula Plate provides 2.7mm and 3.5mm locking or non-locking cortical screws and 4.0mm cancellous screws.

Enhanced Screw Angulation enables the surgeon to maximize purchase in the fibular area. The combination of the screw trajectory and the locking screw technology offers a strong stabilization.



Anatomical Plate Design matches the anatomy of the patient with little or no bending. The Hudson Locking Distal Fibula Plate may also act as a guide or template for restoring the patient's original anatomy when reconstructing a highly comminuted fracture.



Material
Titanium Alloy



Ordering Information

Catalogue No	Product Description
10-2030-04	Locking Fibular Plate 4 Hole
10-2030-06	Locking Fibular Plate 6 Hole
10-2030-08	Locking Fibular Plate 8 Hole
10-2030-10	Locking Fibular Plate 10 Hole
10-2030-12	Locking Fibular Plate 12 Hole
10-2030-14	Locking Fibular Plate 14 Hole

Manufactured or Distributed by:



725 River Road, Suite 32-254
Edgewater, NJ, 07020
www.gothammedical.com

Gotham Medical is registered trademark. All rights reserved.
Current information for Use, Indications, Contraindications, Warnings, Precautions, Adverse Effects,
Sterility, and Storage Instructions are available in the product packages.

